

**General Description**

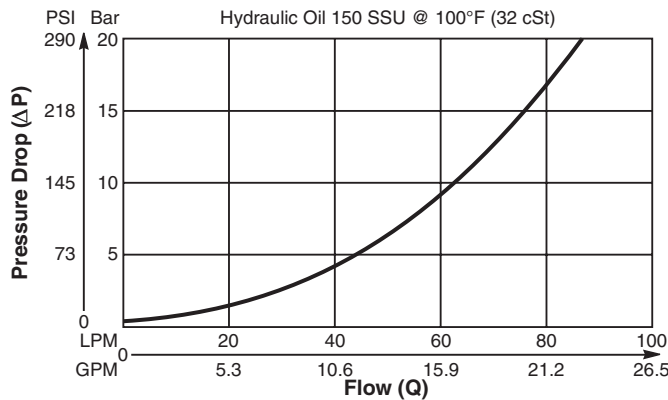
Two Position, Three Way, Spring Centered Shuttle Valve. For additional information see Technical Tips on pageSH2.

**Features**

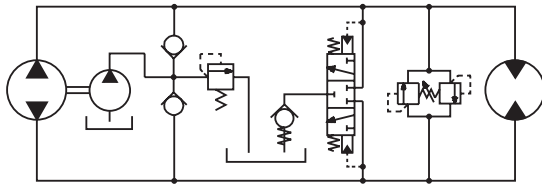
- High flow capacity
- Various switching pressures available
- Use as purge valve in transmission systems
- Hardened working parts for maximum durability
- All external parts zinc plated

**Performance Curve**

**Pressure Drop vs. Flow** (Through cartridge only)



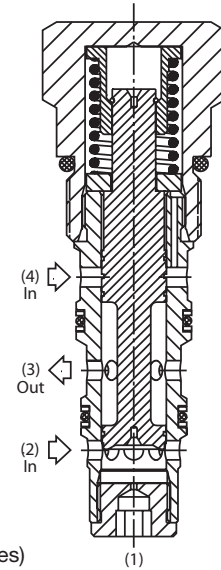
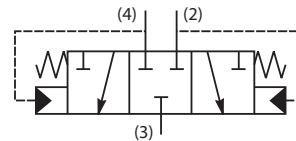
**Application**



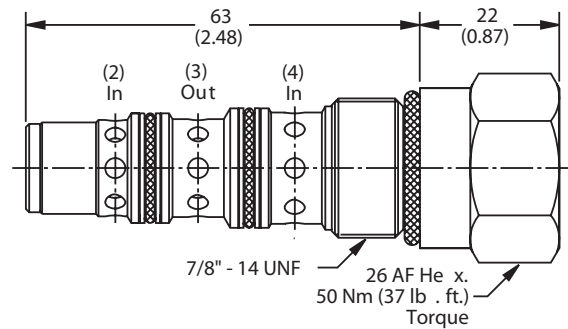
Purge valve in transmission circuit

**Specifications**

Rated Flow	100 LPM (26 GPM)
Nominal Flow @ 7 Bar (100 PSI)	55 LPM (15 GPM)
Maximum Inlet Pressure	420 Bar (6000 PSI)
Cartridge Material	All parts steel. All operating parts, hardened steel.
Operating Temp. Range/Seals	-34°C to +121°C (Nitrile, Buna-N) (-30°F to +250°F) -26°C to +204°C (Fluorocarbon) (-15°F to +400°F)
Fluid Compatibility/Viscosity	Mineral-based or synthetic with lubricating properties at viscosities of 45 to 2000 SSU (6 to 420 cSt)
Filtration	ISO-4406 18/16/13, SAE Class 4
Approx. Weight	0.17 kg (0.37 lbs.)
Cavity	C10-4 (See BC Section for more details)



**Dimensions** Millimeters (Inches)



**Ordering Information**

<b>K04C3</b>	<b>10.0</b>	<b>N</b>
Shuttle Valve	Switching Pressure	Seals

**Highlighted** represents preferred options that offer the shortest lead times. Other options may be available, but at extended lead times.

Code	Switching Pressure
10.0	10.0 Bar (145 PSI)

**Note:** Port 1 on the Line Body must be plugged

Code	Seals
N	Nitrile

Order Bodies Separately See section BC

Kit	Part Number
Nitrile Seal	SK30504N-1
Fluorocarbon Seal	SK30504V-1

**B10** - **4** - **8T**  
 10 size      4-Way Cavity      Port Size

Code	Porting / Body Material
8T	SAE-8 / Steel (5000 PSI)

**CV**  
Check Valves

**SH**  
Shuttle Valves

**LM**  
Load/Motor Controls

**FC**  
Flow Controls

**PC**  
Pressure Controls

**LE**  
Logic Elements

**DC**  
Directional Controls

**SV**  
Solenoid Valves

**PV**  
Proportional Valves

**CE**  
Coils & Electronics

**BC**  
Bodies & Cavities

**TD**  
Technical Data